

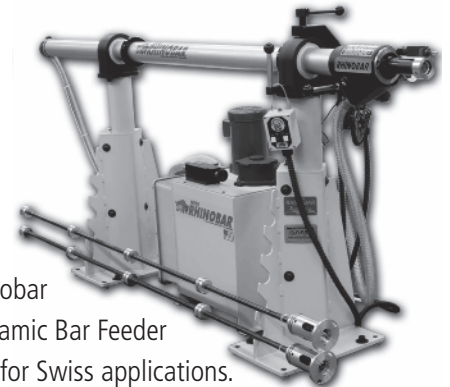
Lexair Inc.

Innovative Solutions for Your Workholding & Barfeed Applications

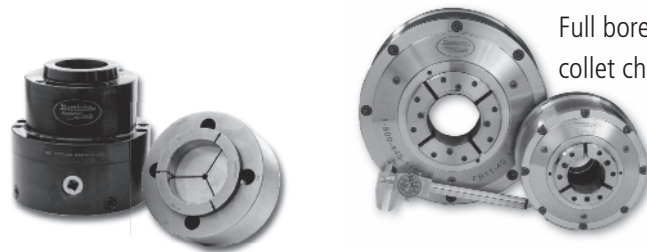
Problem Solved.



16 models of stationary collet chucks.
Both hydraulic and pneumatic. From 1/4" to 7" capacity.



Mini Rhinobar
Hydrodynamic Bar Feeder
designed for Swiss applications.
To 1-5/8" capacity. Standard Rhinobar to 3" capacity.



Full bore, self-contained
collet chucks to 5.5"
capacity.

Wrench Operated Collet Chucks.

7 sizes from 1-1/16" to 2-1/4" and 5C and 16C Step Chuck Models to 6" diameter. Ideal for rotary indexers, teach lathes or any application where no actuator or drawtube is present.

Prodyne Fixed Length Chucks.



For Index Style Collets.
1-5/8", 2-3/8", 3-1/16".
A2-5 to A2--8 with 140,
170, and 220mm mounts
available.



Direct Mount Chucks. Available in 5C, 16C, and 3J Models with A2-5, A2-6 and A2-8 direct mountings.

SYSTEC

Lexair is the exclusive importer and distributor of the Brazilian Systec Front Mounted Pneumatic Self Contained Power Chuck.



The Systec front-actuated pneumatically powered jaw chuck from Lexair is an ideal automation upgrade for manual lathes, as well as rotary tables and indexers that require higher grip force for difficult applications. The self-contained air-open/air-close chucks are available in five sizes from approximately 5" to 12" inches. The drawtube-free design offers through-hole capacity up to 4.52", with more than 18,000 lbf grip force at 1000 rpm for the largest size. Systec master-jaw/top-jaw chucks are available with inch or metric serrations in all sizes. Most sizes are available in two, three or four-jaw configurations, and the four-jaw design can be used as a two-jaw. Using an adapter plate, the chuck will fit A5 to A11 spindle faces.

284 Pinebush Road, Unit 1, Cambridge, ON N1T1Z6

sales@omnitoool.ca - www.omnitoool.ca

Tel : 519-622-3065 1-800-265-3541 Fax : 519-622-3270

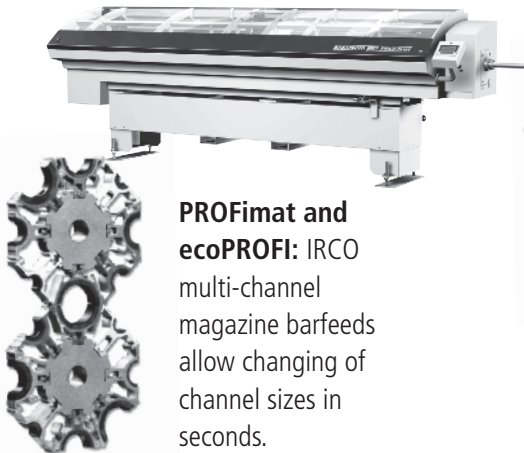
Lexair Inc.

Innovative Solutions for Your Workholding & Barfeed Applications

Problem Solved.

BREUNING *ARGO*

Lexair is the exclusive North American distributor and service provider for Germany's premiere manufacturer of barfeeding and unloading lathe automation.



PROFimat and ecoPROFI: IRCO multi-channel magazine barfeeds allow changing of channel sizes in seconds.



ILS REX automatic lathe unloading system. Diameters to 100 mm, lengths to 1200 mm.

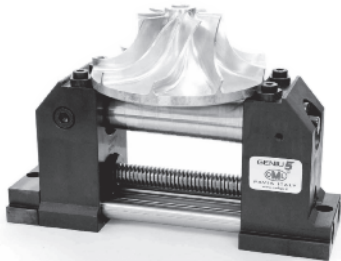


SiMag can be configured as a single-channel magazine barfeeder or unloader.

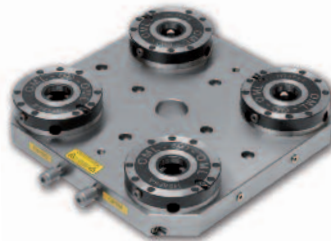
Available for stock sizes up to 6 in. diameter and 40 ft. long



Lexair is the exclusive distributor of OML workholding solutions including SinterGrip, CIVI Rails, Genius Vise, MC Vise, Tombstones and APS units.

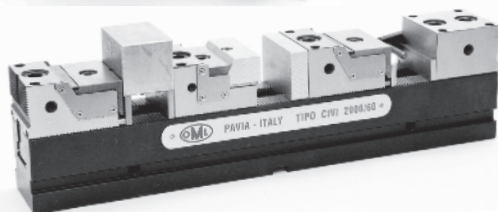


The Genius Vise: 5-Axis vise with part pull down. Handles parts up to 8 in.



APS Systems: A Zero Point System with 3 jaw clamping and TURBO function.

SinterGrip



The CIVI Rail System: Precision multi-part vise for tombstones and trunnions. Rails are 60 mm or 90 mm wide and up to 630 mm in length.



SinterGrip Vise Jaws: For all makes of vises. Unbreakable grip on just 1/8" of material.